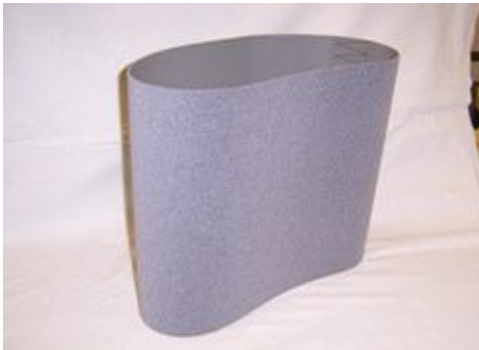


FLOCK BELT



Flock Belts are becoming increasingly popular where only a small amount of glaze needs to be cleaned from the base of the ware.

The nylon filaments give a shallow, sharp and clean wipe and are especially popular with producers of tableware.

They are available in Grey and Black colour. The filaments on the Grey belts are 2.5mm long, whilst the filaments on the Black Belts are available in 1.3, 2.5 and 4.0 mm lengths.